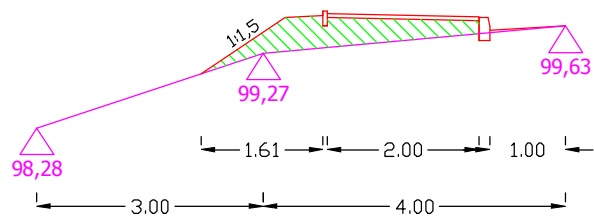


PRZEKROJE POPRZECZNE DROGI WOJEWÓDZKIEJ NR 655 OD KM 115+216 DO KM 115+698 (nasyp)

SKALA 1:100

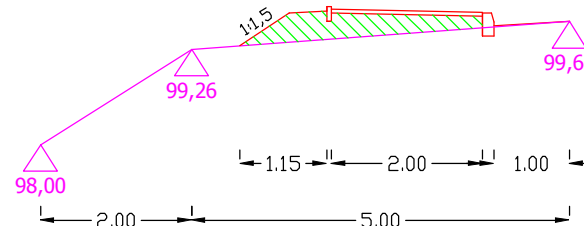
115+230

$P_{nas.}=1,0205 \text{ m}^2$



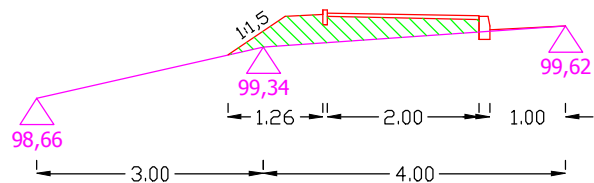
115+250

$P_{nas.}=0,8276 \text{ m}^2$



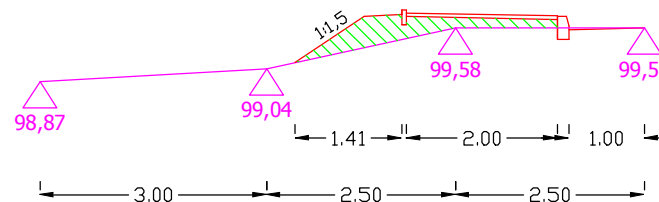
115+270

$P_{nas.}=0,8371 \text{ m}^2$



115+290

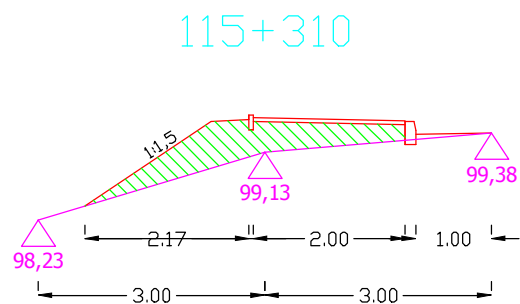
$P_{nas.}=0,6908 \text{ m}^2$



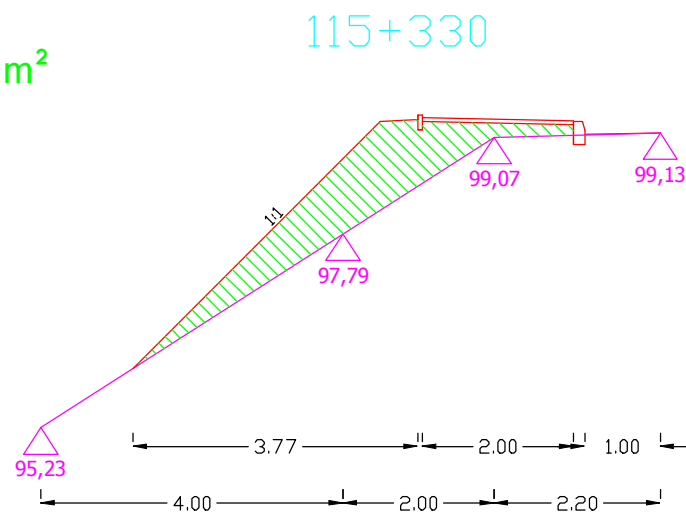
Sporządził:

PRZEKROJE POPRZECZNE DROGI WOJEWÓDZKIEJ NR 655 OD KM 115+216 DO KM 115+698 (nasyp)

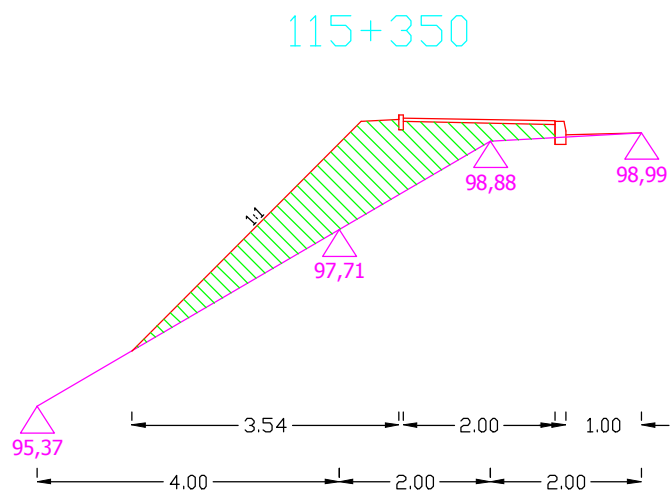
SKALA 1:100



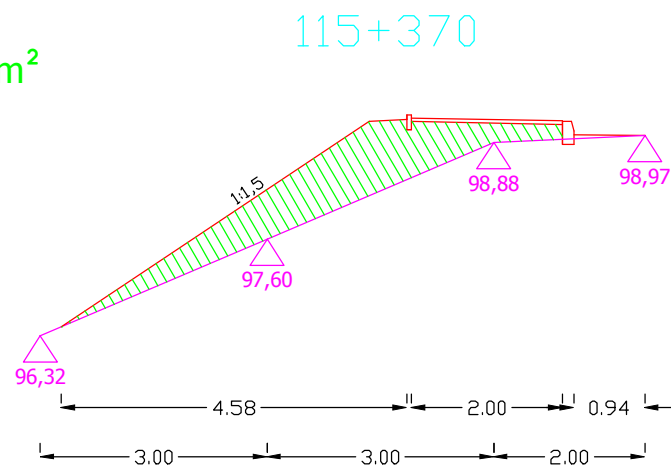
$P_{nas.}=1,4303 \text{ m}^2$



$P_{nas.}=3,1352 \text{ m}^2$



$P_{nas.}=3,3758 \text{ m}^2$



$P_{nas.}=3,2172 \text{ m}^2$

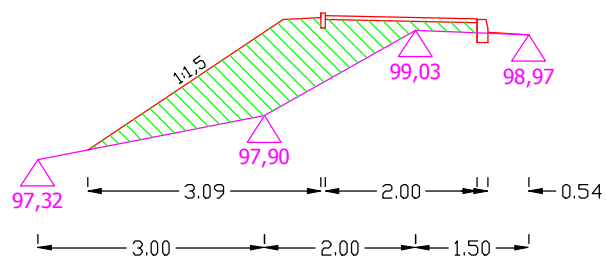
Sporządził:

PRZEKROJE POPRZECZNE DROGI WOJEWÓDZKIEJ NR 655 OD KM 115+216 DO KM 115+698 (nasyp)

SKALA 1:100

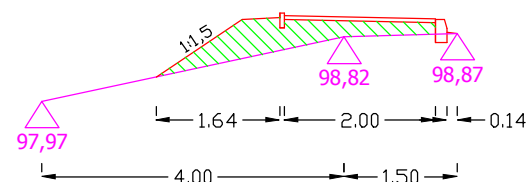
115+390

$P_{nas.}=2,7749 \text{ m}^2$



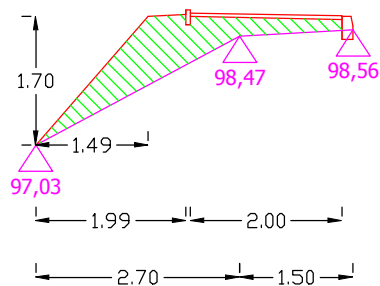
115+410

$P_{nas.}=1,0131 \text{ m}^2$



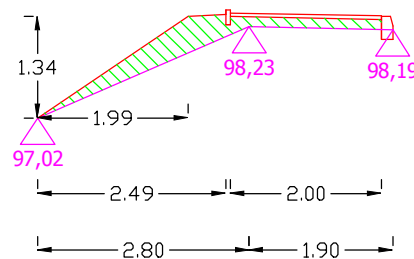
115+430

$P_{nas.}=1,6367 \text{ m}^2$



115+450

$P_{nas.}=0,9453 \text{ m}^2$



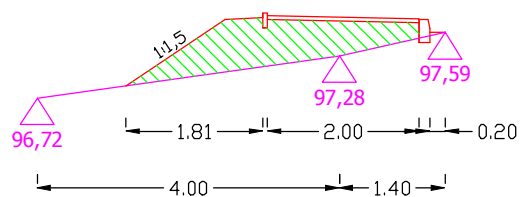
Sporządził:

PRZEKROJE POPRZECZNE DROGI WOJEWÓDZKIEJ NR 655 OD KM 115+216 DO KM 115+698 (nasyp)

SKALA 1:100

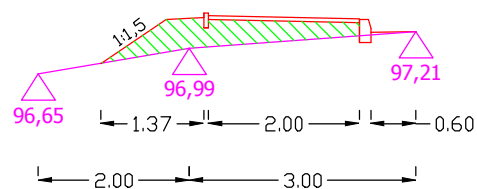
115+470

$P_{nas.}=1,6811 \text{ m}^2$



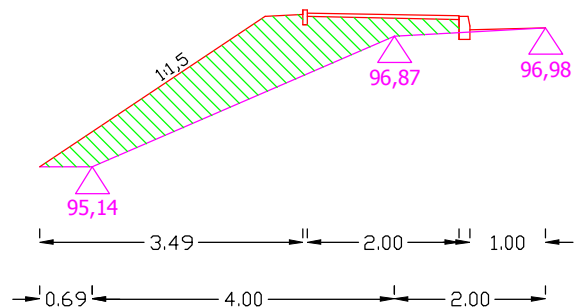
115+490

$P_{nas.}=0,9379 \text{ m}^2$



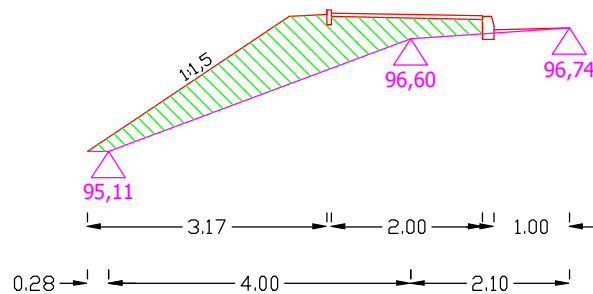
115+510

$P_{nas.}=3,0750 \text{ m}^2$



115+530

$P_{nas.}=2,4684 \text{ m}^2$



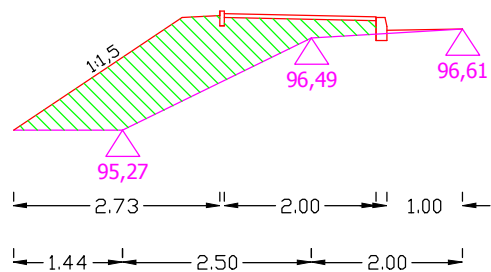
Sporządził:

PRZEKROJE POPRZECZNE DROGI WOJEWÓDZKIEJ NR 655 OD KM 115+216 DO KM 115+698 (nasyp)

SKALA 1:100

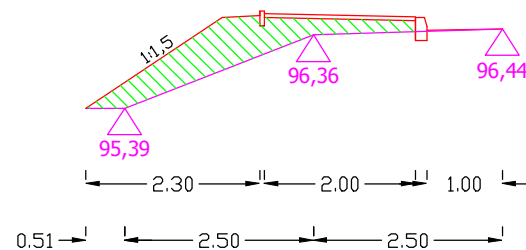
115+550

$P_{nas.}=2,8567 \text{ m}^2$



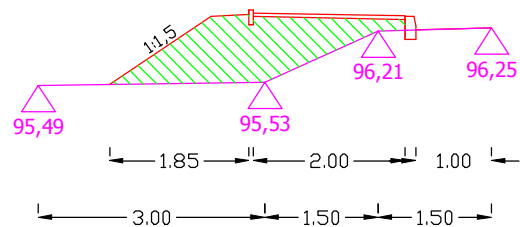
115+570

$P_{nas.}=1,5617 \text{ m}^2$



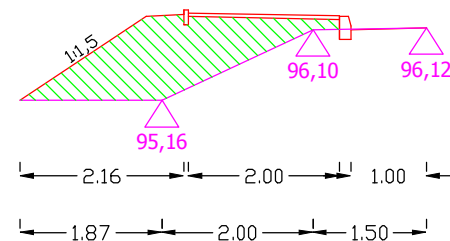
115+590

$P_{nas.}=2,0338 \text{ m}^2$



115+610

$P_{nas.}=2,4568 \text{ m}^2$



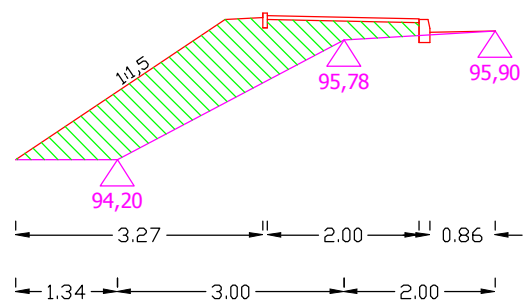
Sporządził:

PRZEKROJE POPRZECZNE DROGI WOJEWÓDZKIEJ NR 655 OD KM 115+216 DO KM 115+698 (nasyp)

SKALA 1:100

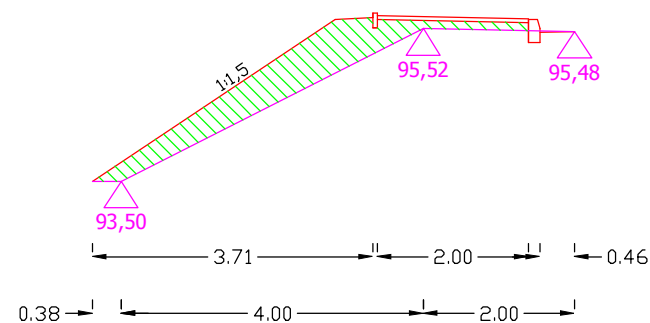
115+630

$P_{nas.}=3,3002 \text{ m}^2$



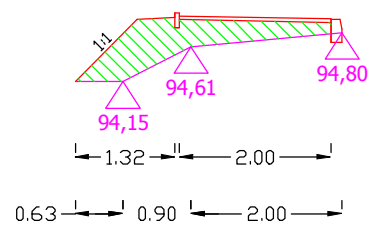
115+650

$P_{nas.}=2,0455 \text{ m}^2$



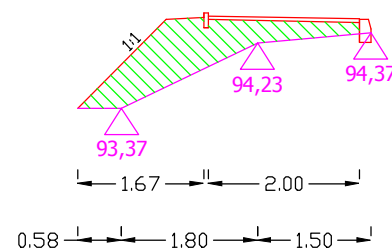
115+680

$P_{nas.}=1,1757 \text{ m}^2$



115+698

$P_{nas.}=1,6205 \text{ m}^2$



Sporządził: